

# NAMED AFTER DEATH

A COMPANION WORKBOOK

WRITTEN BY SARAH BLAKE

ILLUSTRATED BY LYNNE KOVALCHIK

CONNECT THE DOTS.

• D  
• E  
• A  
• T  
• H

• G  
• R

• E

• W

• B

• E

• S

• I

• D

• E

• M

• E



WRITE ABOUT A FEATURE THAT MAKES YOU HUMAN, THAT MAKES YOU SPECIFICALLY OF EARTH AND ITS PARTICULAR ENVIRONMENT, ITS CHEMICAL MAKEUP.

A large, empty rectangular box with a thin black border, occupying the lower two-thirds of the page. It is intended for the user to write their response to the prompt above.

# WORDFIND

S	L	A	W	A	Y	H	E	R	D
U	O	R	E	N	D	O	W	P	A
M	N	U	P	G	O	N	T	A	S
U	N	D	E	R	B	R	U	S	H
D	E	G	L	A	Y	S	T	E	A
W	O	O	D	S	P	G	A	H	R
Y	L	G	E	S	N	O	W	E	P

UNDERBRUSH

MUD

WOODS

SNOW

GRASS

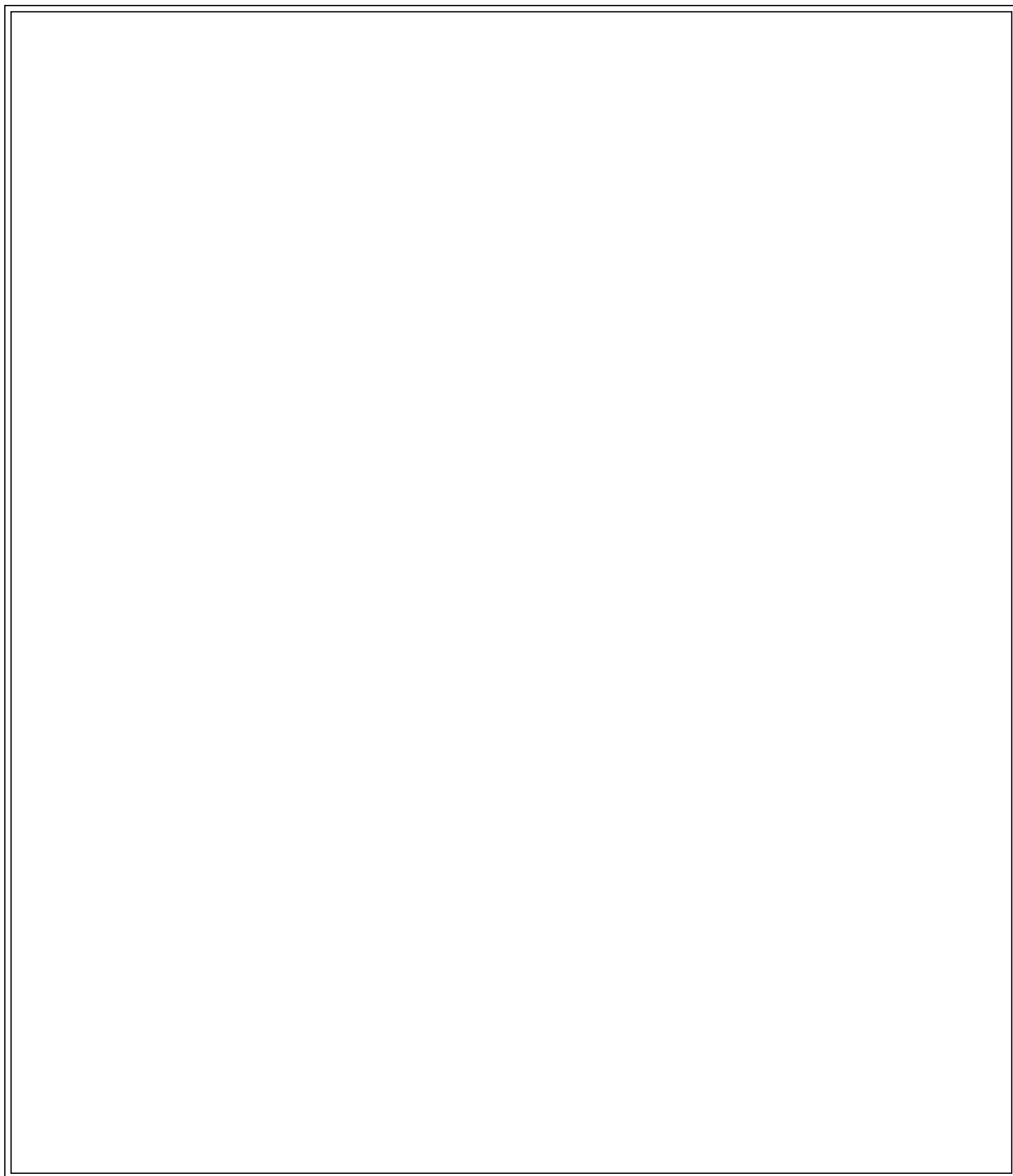
BODY

NORTH

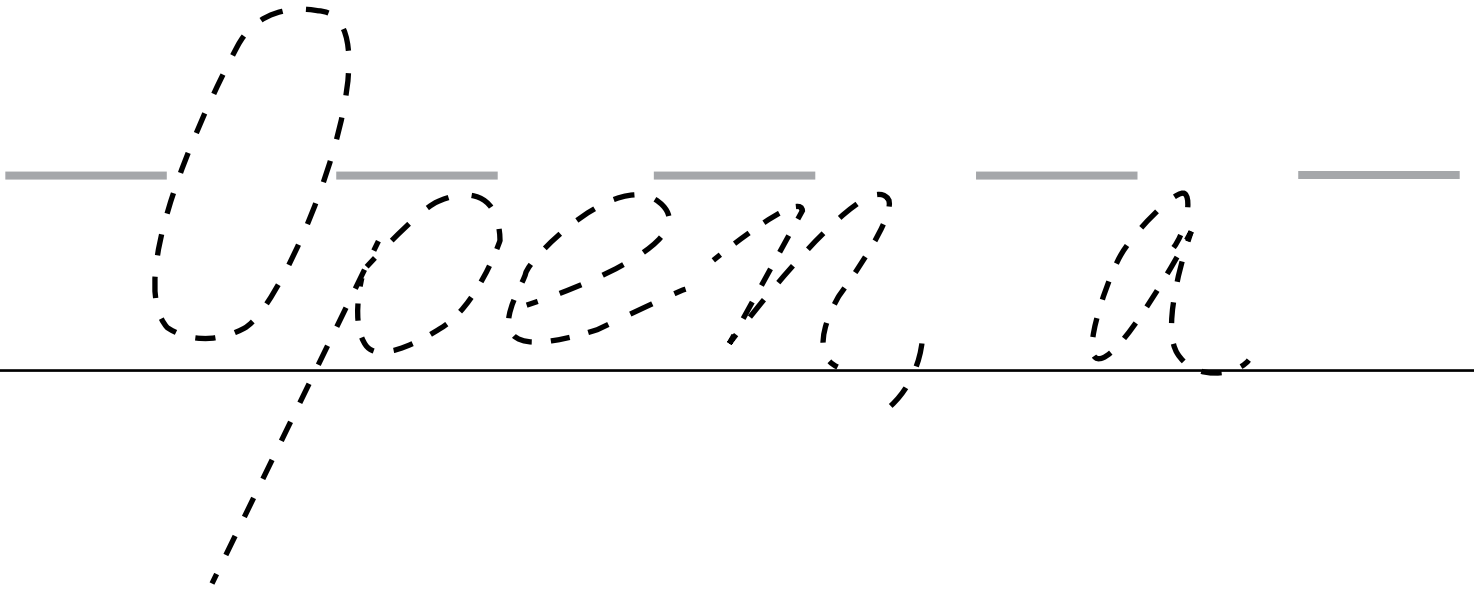
SHARP

AWAY

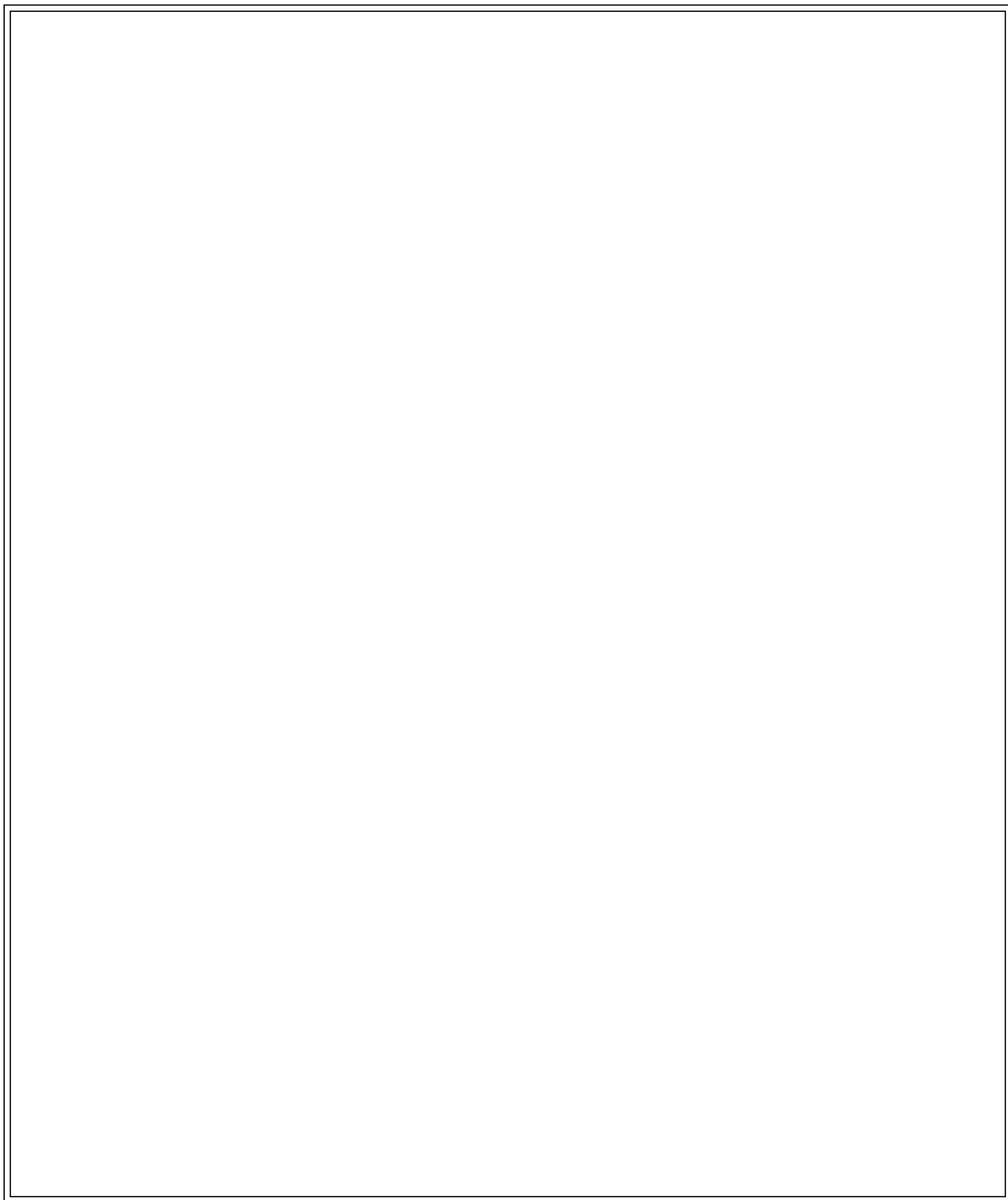
FIND A DIAGRAM OF A PART OF THE BODY AND EXAMINE IT IN AT LEAST FIVE DIFFERENT WAYS — LITERALLY, FIGURATIVELY, IN YOUR LIFE, IN ANOTHER'S, ASSOCIATIVELY, IN THE FUTURE, IN THE PAST, IN COUPLETS, IN PROSE, ETC.

A large, empty rectangular box with a thin black border, occupying the lower two-thirds of the page. It is intended for a student to draw a diagram of a body part and then write their examination of it in various ways as instructed in the text above.

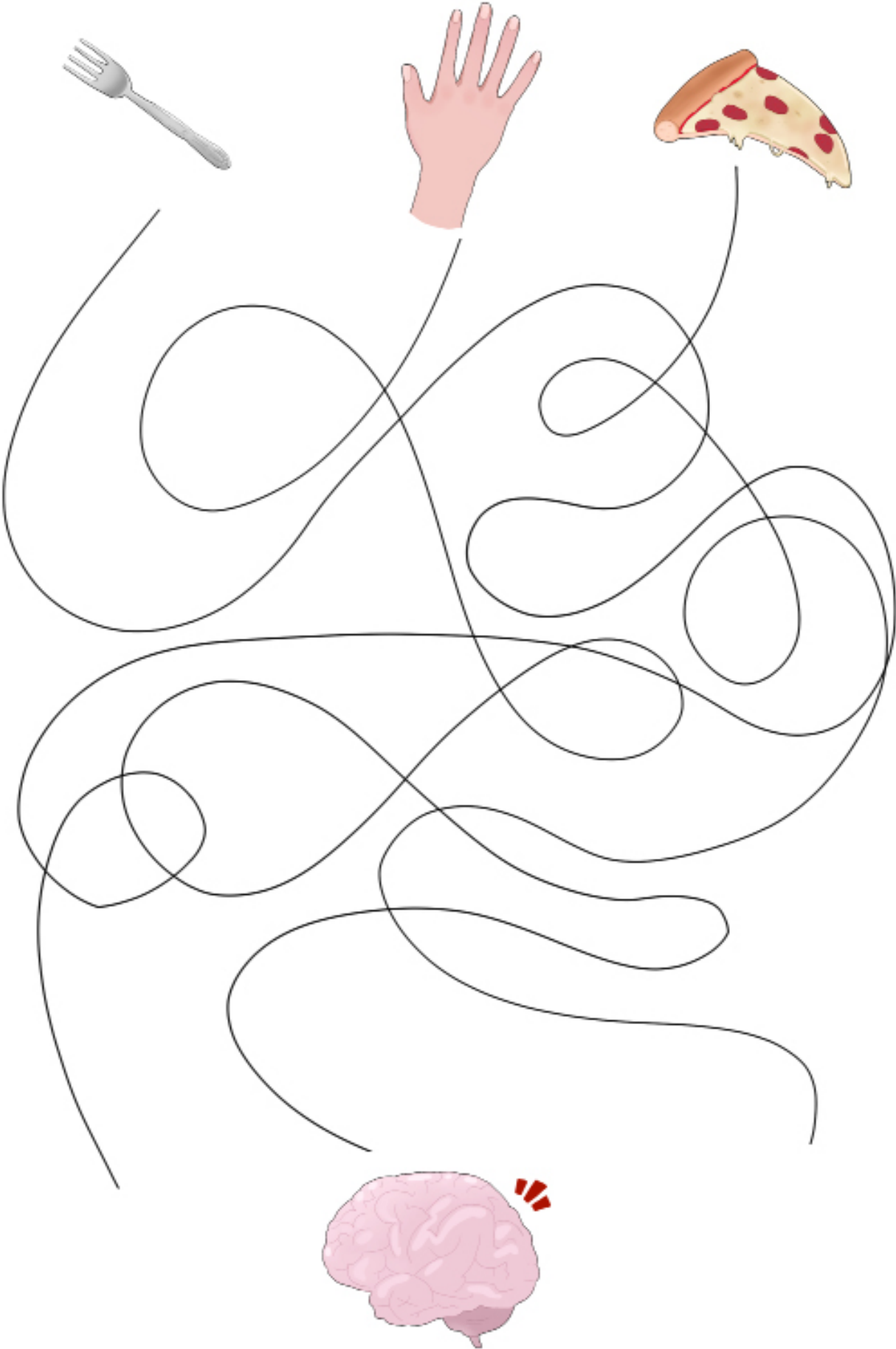
TRACE THE LETTERS.



WRITE A POEM ABOUT WHERE YOU ARE FROM. DO YOU NOT WRITE THESE ALL THE TIME  
IN SOME WAY OR ANOTHER? SOMETIMES I FORGET TO.

A large, empty rectangular box with a thin black border, intended for writing a poem. The box occupies the majority of the page below the introductory text.

TRACE THE PATH.

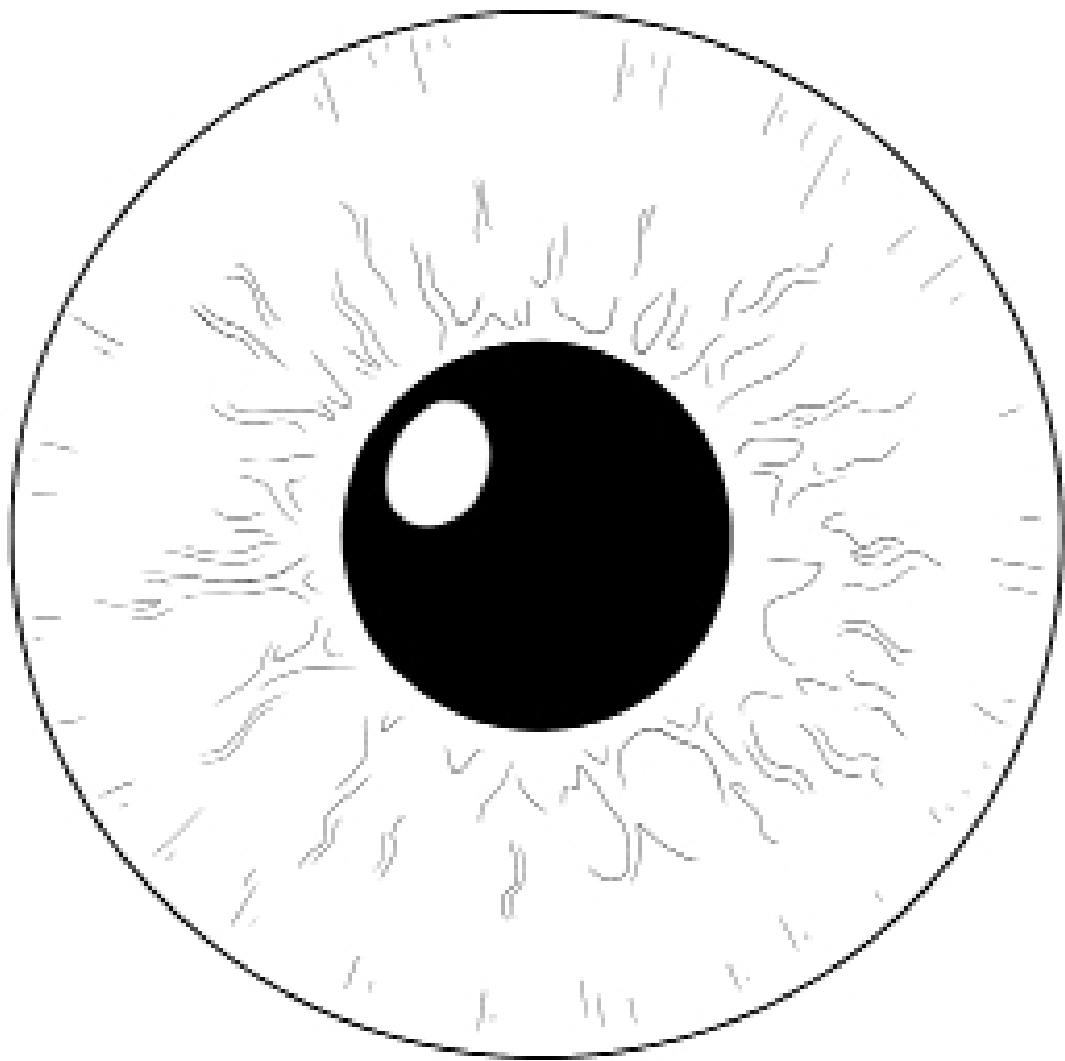




IMAGINE SOMETHING YOU WOULD LOVE FOR A LOVED ONE TO SAY TO YOU. BUILD A POEM AROUND THAT LOVE AND THAT DESIRE.

A large, empty rectangular box with a double-line border, occupying the majority of the page below the instruction. It is intended for the user to write their poem within this space.

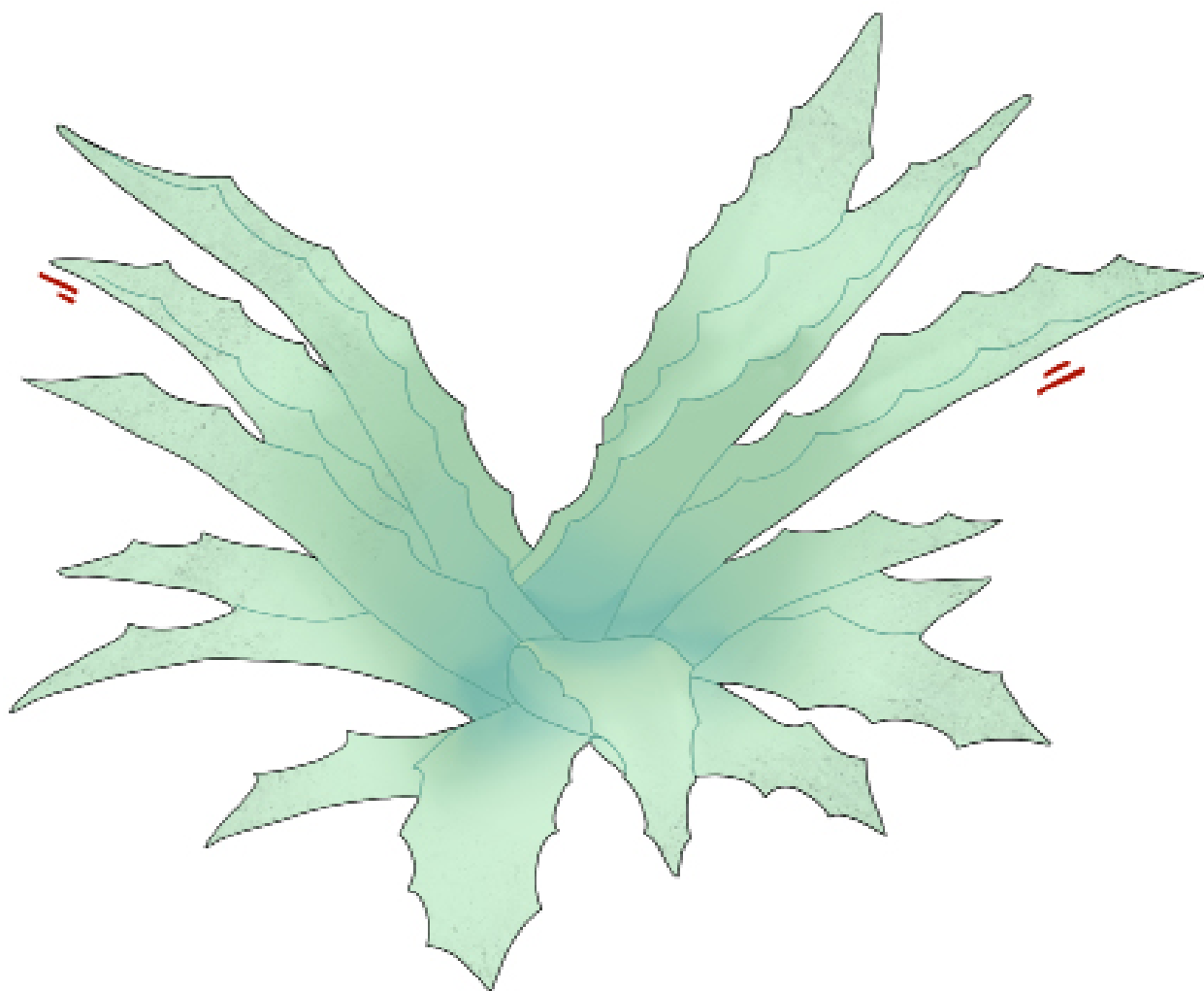
COLOR VERY BLUE.



COMBINE A NATIONAL EVENT WITH A PERSONAL ONE. OR COMBINE A GLOBAL EVENT WITH A PERSONAL ONE. OR BOTH. COMBINE THEM ALL. CONSIDER HOW YOU TRY TO LIVE LIKE A GLOBAL CITIZEN AND THEN CONSIDER HOW YOU MIGHT WRITE A POEM LIKE ONE.

A large empty rectangular box with a double border, intended for writing a poem. The box is white and occupies the lower two-thirds of the page.

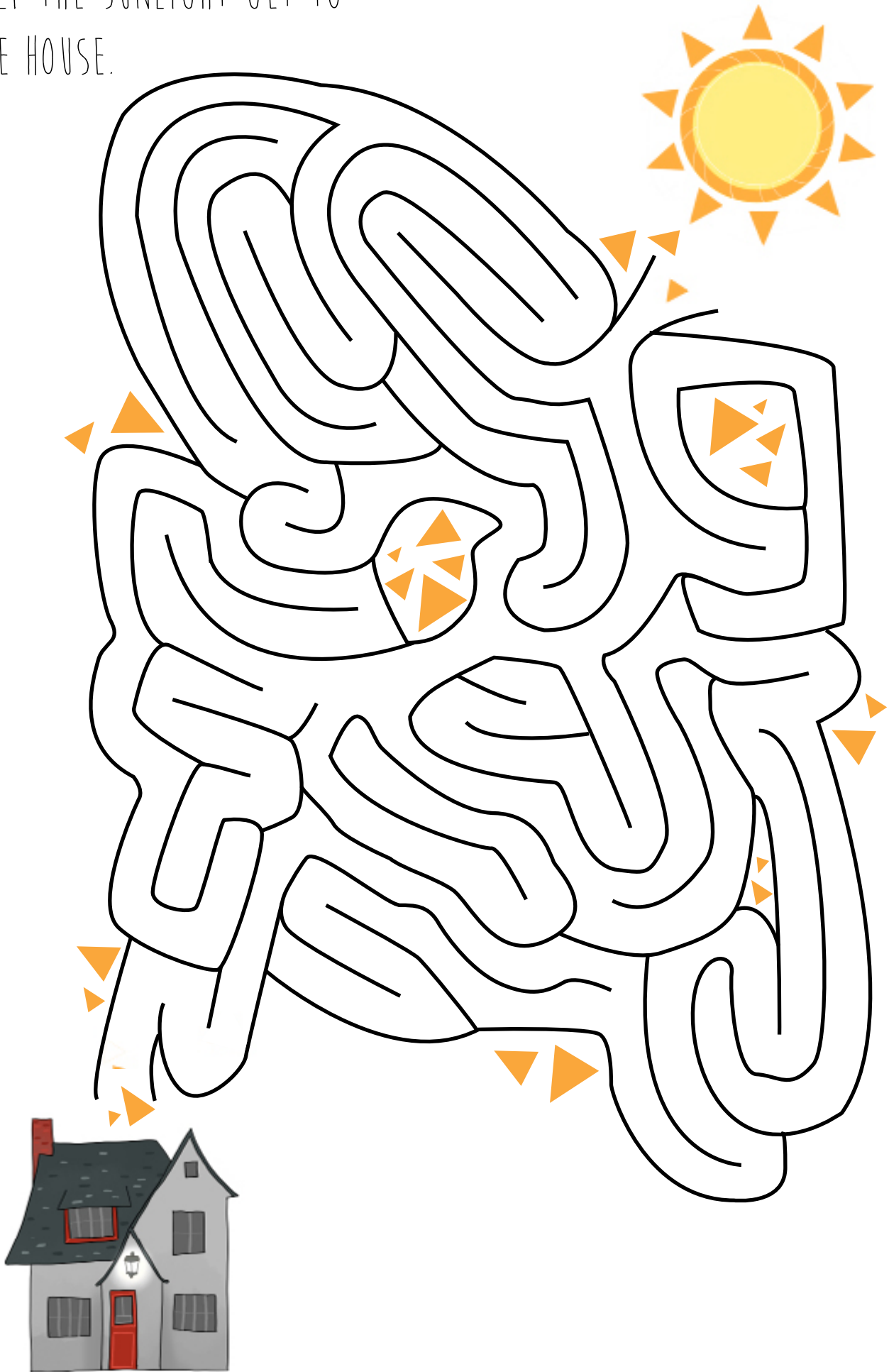
IMAGINE A BLOSSOM FOR THE  
AGAVE AMERICANA.



COMBINE A COSMIC PHENOMENON WITH A HUMAN ONE.

A large, empty rectangular box with a thin black border, occupying the majority of the page below the text. It is intended for a drawing or writing that combines a cosmic phenomenon with a human one.

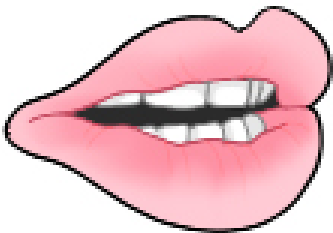
HELP THE SUNLIGHT GET TO  
THE HOUSE.



WRITE A POEM ABOUT WHERE YOU'RE FROM AGAIN.

A large, empty rectangular box with a thin black border, intended for writing a poem. It occupies the majority of the page below the instruction.

REACH MY EAR.



ARE Y	? DEAD IS E		
	O U	SO SURE H	
	U QUITE SURE H		
	SURE HE IS D E		
	O	SURE H E A	
S	E	D	IS D
U	A	Y ARE ?	
R	D	O U	QUI
	?		





DO YOU HAVE A REGRET? DO YOU HAVE A REGRET YOU CAN'T EVEN HAVE BECAUSE IT'S BASED ON MEDICAL PRACTICES YOU CAN'T CONTROL? WRITE INTO YOUR REGRET, THAT SENSELESS THING. BLAME EVERYONE.

A large, empty rectangular box with a thin black border, intended for writing a response to the prompt above. It occupies the majority of the page below the text.

FIND THE WOMAN.



DOES POETRY EVER WORRY YOU? ARE SOME IMAGES TOO PRETTY? GO CULL SOME IMAGES AND WONDER ABOUT THEM AND YOUR WORRY.

A large, empty rectangular box with a double-line border, occupying the lower two-thirds of the page. It is intended for a user to draw or write within it, likely in response to the prompt above.

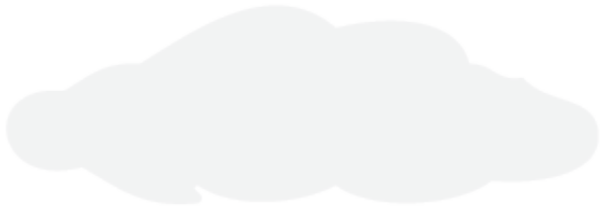
ERASE THE FLIES FROM  
THE HORSE.



IF YOU COULD ASK FOR ANYTHING, WHAT WOULD IT BE? MERCY? A WAY TO MOVE FORWARD AS THE PAST PULLS YOU BACK OR AS GRIEF PULLS YOU IN? PERHAPS.

A large, empty rectangular box with a double-line border, occupying the lower two-thirds of the page. It is intended for a drawing or a written response to the prompt above.

TRY TO DRAW 10,000 BIRDS.



IF YOU CANNOT IMAGINE MOVING FORWARD,  
IMAGINE THE FUTURE YOU WOULD ARRIVE AT.

A large, empty rectangular box with a thin black border, occupying the majority of the page below the text. It is intended for a drawing or a written response to the prompt above.

THIS BOOK IS FOR EVERYONE HAUNTED, AND SO IT IS FOR EVERYONE.